

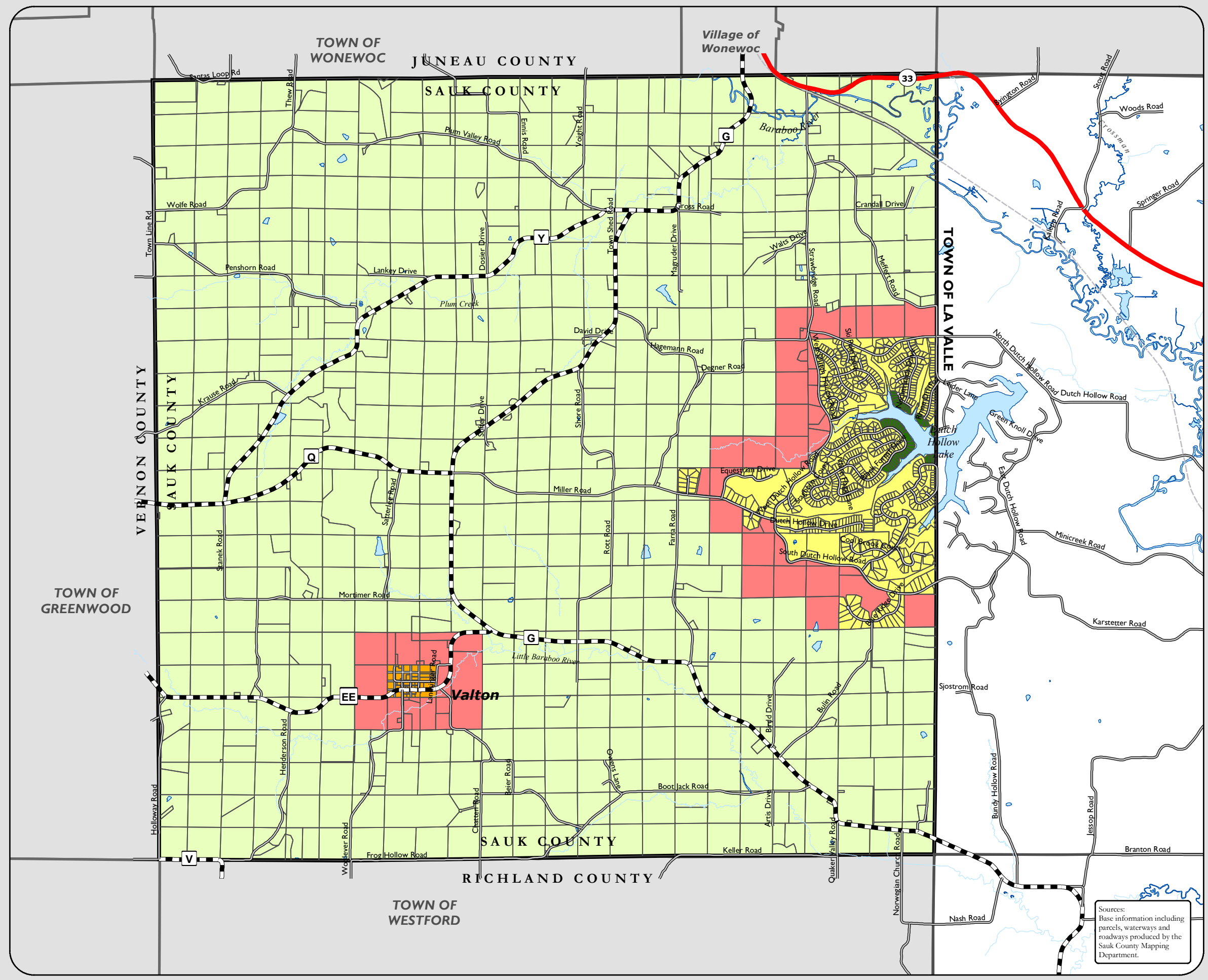
Land Use Districts

Legend

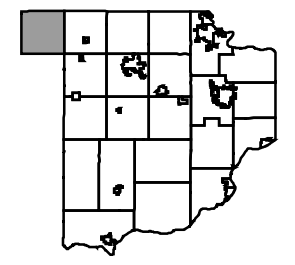
- Future Land Use Districts**
- Rural Agricultural Conservation
 - Rural Estate Residential
 - Shoreline Residential
 - Unincorporated Village
 - Rural Residential Development

- Boundaries**
- Parcel Boundary
 - Town of Woodland
 - Town Boundary
 - County Boundary
 - River/Stream

- Transportation**
- State Highway
 - County Highway
 - Town Road
 - Municipal Street
 - "400" State Trail



Sources:
Base information including parcels, waterways and roadways produced by the Sauk County Mapping Department.



Miles
0 0.4 0.8